

Location: Columbus, GA

**E**quipment  
**B**idding

7255





CAUTION  
No Step

CAUTION  
Hot muffler and exhaust pipe. Burns result from contact. Cool for shield before working in area.

7255

**E**quipment  
**B**idding





**E**quipment  
**B**idding

7255





**E**quipment  
**B**idding

7255





**E**quipment  
**B**idding

7255





CAUTION  
CAUTION

**E**quipment  
**B**idding

7255





**E**quipment  
**B**idding

7255





**E**quipment  
**B**idding

7255







**E**quipment  
**B**idding

7255

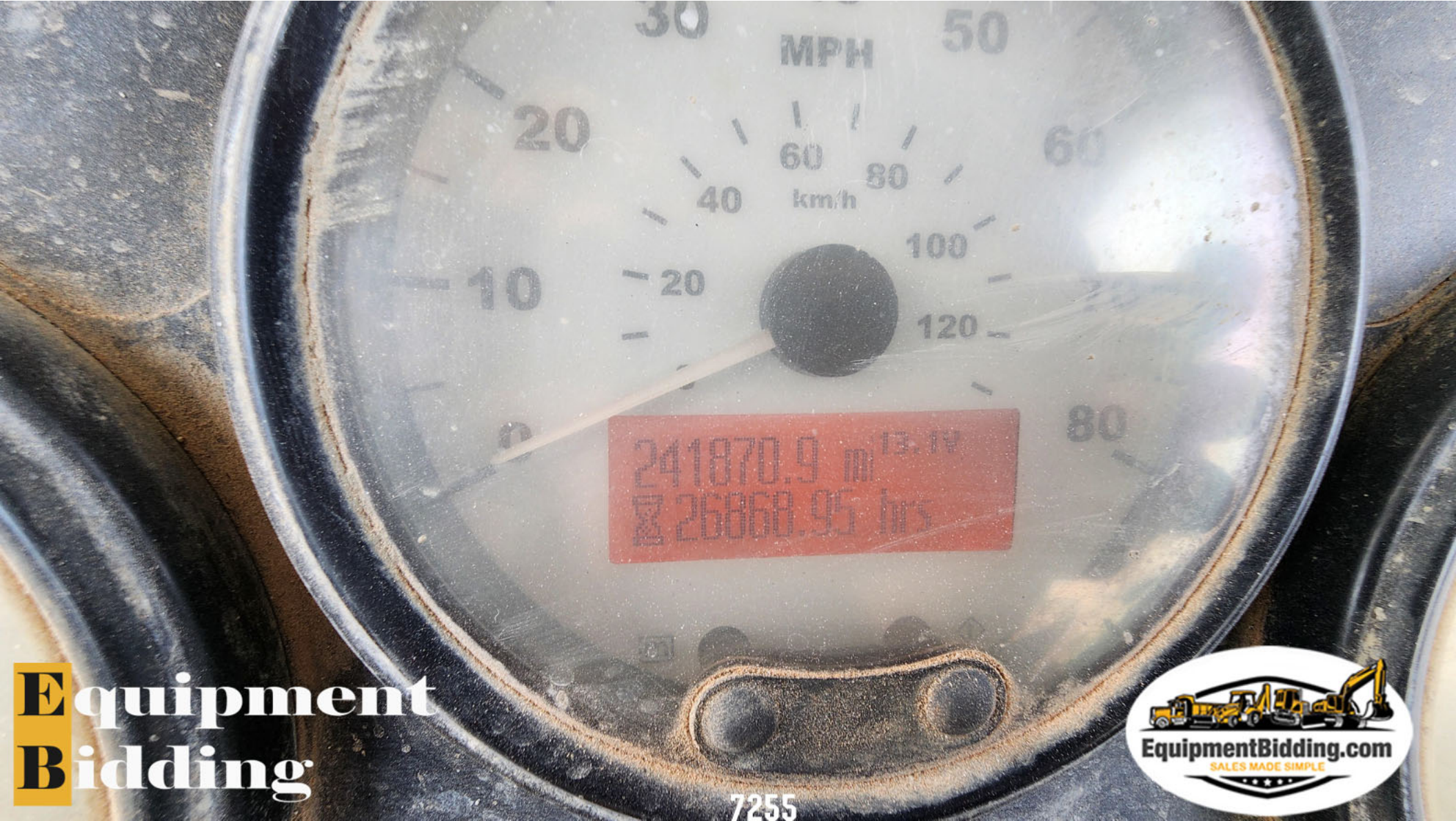




**E**quipment  
**B**idding

7255





241870.9 mi  
26868.95 hrs

7255

**E**quipment  
**B**idding

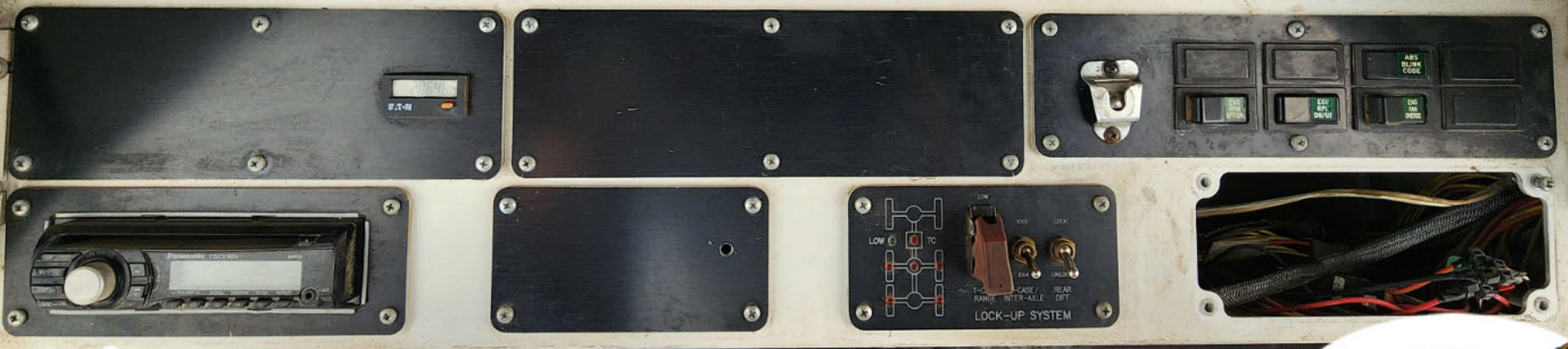
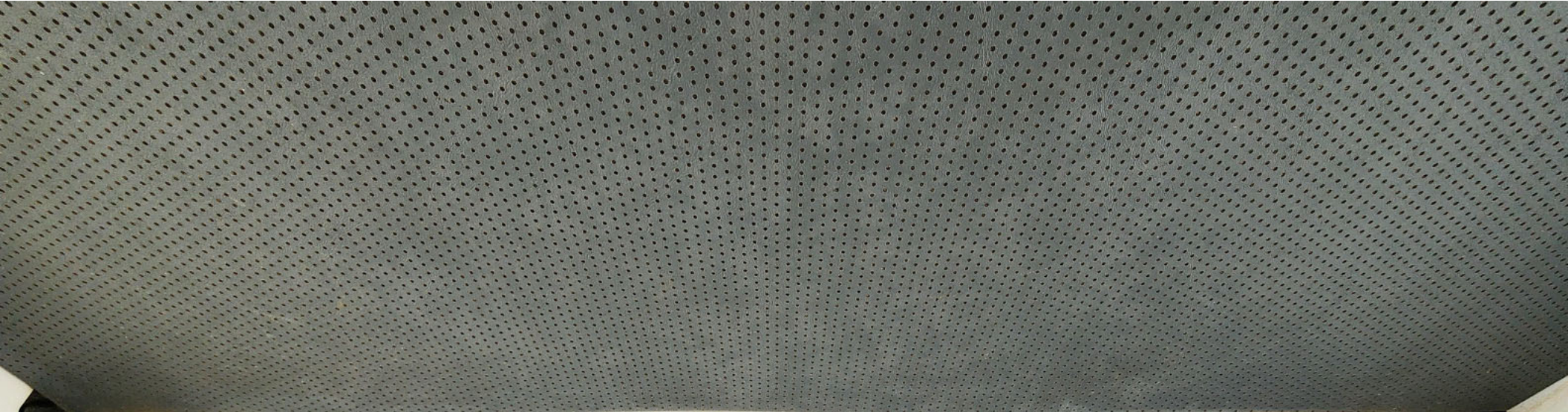




**E**quipment  
**Bidding**



7255

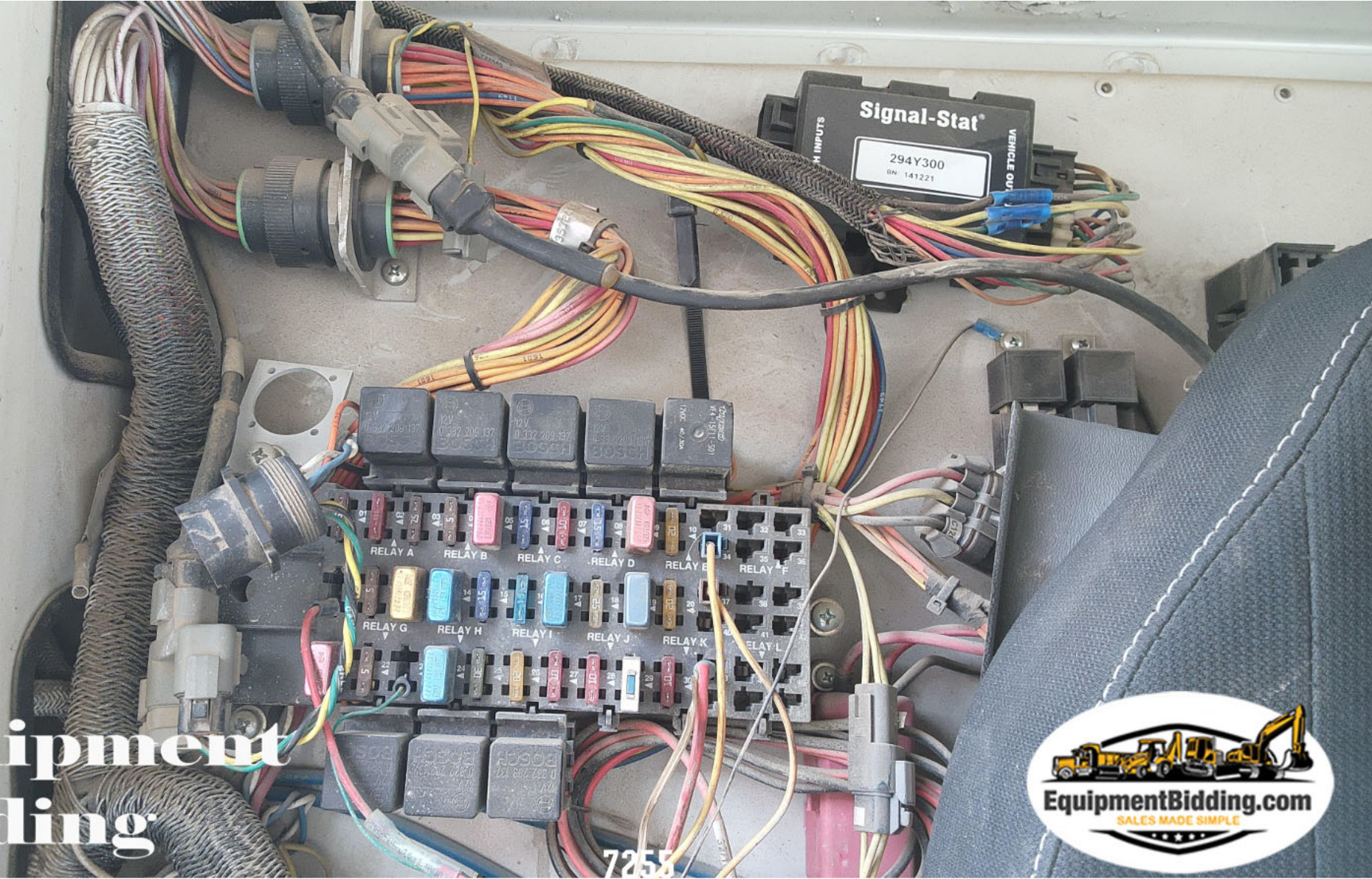


**E**quipment  
**B**idding


7255



**E**quipment  
**B**idding



7255


**11 Cubic Yard**  
**8.41 Cubic Meter**  
**MIXER**  
**MAXIMUM CAPACITY**

Serial Number: \_\_\_\_\_  
 Drum Volume: 510 Cu.Ft. 14.44 Cu.M.  
 Mfr's rated mix capacity: 11.4 Cu.Yd. 8.79 Cu.M.  
 Average agitator capacity: 13 Cu.Yd. 9.94 Cu.M.

Mixing speed range: 6 to 19 rpm  
 Agitating speed range: 2 to 3 rpm

The agitation capacity of inclined drum, open end mixers will vary and is governed by drum axis angle, drum speed, truck chassis suspension, road grade and other variables.

Water tank capacities		
Measuring Capacity	Gal.	Liters
Flushing Capacity	Gal.	Liters

**⚠ WARNING**

Do not fill the mixer drum with an amount of concrete that will cause the driv or jaw of the truck (as shown on the certification label of the vehicle manufacturer) to be exceeded.  
 The manufacturer's data plate is fixed to the mixer, indicating the mixer capacity of the drum.  
 The capacity of a drum is for concrete only.  
 The weight of the drum is not included in the capacity.

**E**quipment  
**B**idding

7255





**E**quipment  
**B**idding

7255







**E**quipment  
**B**idding

7255





**E**quipment  
**B**idding

7255





Equipment Bidding  
7255

NO CELL PHONES OR  
TEXTING WHILE DRIVING

7255



**E**quipment  
**B**idding



**E**quipment  
**B**idding

7255





**E**quipment  
**B**idding

7255





**E**quipment  
**B**idding

7255





**E**quipment  
**B**idding

7255





**E**quipment  
Bidding

7255







**E**quipment  
**B**idding

7255





**E**quipment  
Bidding

7255





OSHK

7255

**E**quipment  
**B**idding

