



Equipment
Bidding





Equipment
Bidding





Equipment
Bidding





Equipment
Bidding





Equipment
Bidding





Equipment
Bidding





Equipment
Bidding





Equipment
Bidding





Equipment
Bidding





Equipment
Bidding



Location: Sugar Hill, GA

Equipment
Bidding





Equipment
Bidding





Equipment
Bidding





Equipment
Bidding



Equipment
Bidding





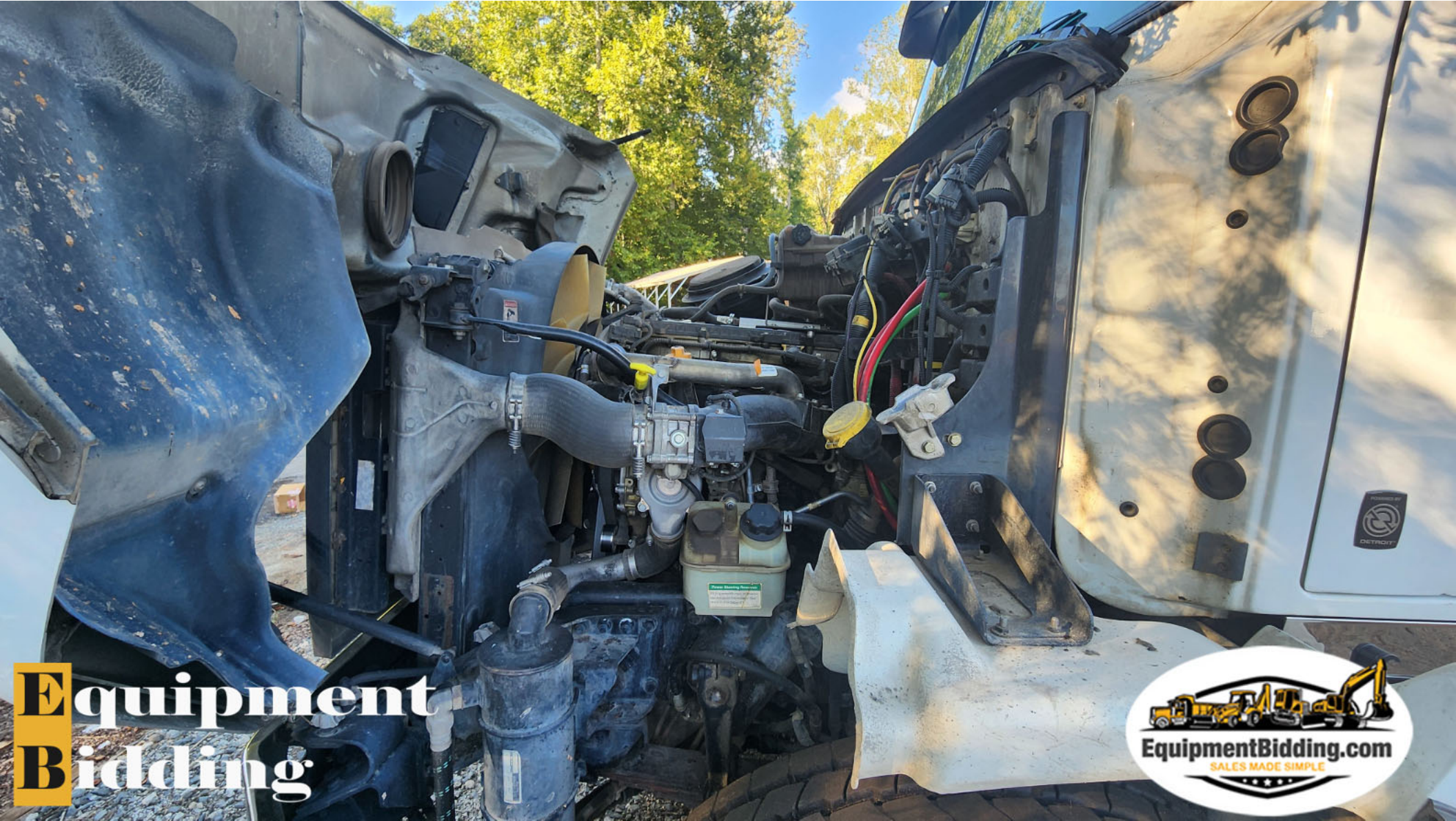
Equipment
Bidding





Equipment
Bidding





Equipment
Bidding





Equipment
Bidding



WESTERN STAR TRUCKS®

HOLD TO
EXPAND



HOLD TO
EXPAND

ENGINE 356715.0 MI
ENGINE DATA

HOLD TO SET



HOLD TO SET

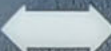
DATASTAR

Equipment
Bidding



WESTERN STAR TRUCKS®

HOLD TO
EXPAND



HOLD TO
EXPAND

ENG HOURS 5228 HR
ENGINE 356715.0 MI

HOLD TO SET



HOLD TO SET

DATASTAR

Equipment
Bidding





Equipment
Bidding





VEHICLE NOISE EMISSION CONTROL INFORMATION

DAIMLER TRUCKS N.A. LLC

DATE OF MANUFACTURE

07/15

THIS INCOMPLETE VEHICLE, AS DELIVERED BY WESTERN STAR TRUCKS
CONFORMS TO EPA REGULATIONS FOR NOISE EMISSION APPLICABLE TO MEDIUM
AND HEAVY TRUCKS. IT IS THE RESPONSIBILITY OF THE FINAL STAGE MANUFACTURER
TO COMPLETE THIS VEHICLE WHILE MAINTAINING CONFORMANCE TO 40 CFR PART 205,
INCLUDING LABELLING FOR COMPLIANCE (SEC. 205.55-4).

L PART NO. 24-01216-020 REV C

Equipment
Bidding





Equipment
Bidding



INCOMPLETE VEHICLE (VEHICLE INCOMPLETE)

WFF24
SAFETY
MARK

TYPE: TRUCK
MANUFACTURED BY
VEHICLE ID NO
DATE OF MFR
GVWR/PWR-LBS
GVWR/PWR-LBS

DATE/PLANT NUMBER/NO. IN S.E.C.
VIN/VEHICLE IDENTIFICATION NO.
12/15
10,432
23,000



FRONT W/LE
FIRST INT HOLE
SECOND INT HOLE
THIRD INT HOLE
FOURTH INT HOLE
FIFTH INT HOLE
SIXTH INT HOLE
REAR W/LE

GVWR/PWR-LBS GVWR/PWR-LBS

10,432 23,000

TIRES

11R24.5(H)

WINS

24 518.25

HPA COLD

827

PSI COLD

120

"S" SINGLE/"D" DUAL

S

L PART NO.

24-01216-070 REV C

Equipment
Bidding



MFD. BY: OX BODIES
 FAYETTE, ALABAMA
 DATE OF MFR: MO. 09 YR. 2015
 GVWR: 29,937 KG (66,000 LB)
 GAWR-FRONT:
 9,072 KG(20,000 LB)
 WITH 425/65R22.5L TRES.
 22.5X12.25 RIMS, @ 827 KPA
 (120 PSI) COLD SINGLE
 GAWR-INTERMEDIATE (1):
 10,432 KG(23,000 LB)
 WITH 11R24.5H TRES.
 24.5X8.25 RIMS, @ 827 KPA
 (120 PSI) COLD DUAL
 GAWR-INTERMEDIATE (2):
 KG(LB)
 WITH TRES.
 RIMS, @
 (PSI) COLD
 GAWR-REAR:
 10,432 KG(23,000 LB)
 WITH 11R24.5H TRES.
 24.5X8.25 RIMS, @ 827 KPA
 (120 PSI) COLD DUAL

THIS VEHICLE HAS BEEN COMPLETED
 IN ACCORDANCE WITH THE PRIOR
 MANUFACTURERS' IVD, WHERE
 APPLICABLE. THIS VEHICLE
 CONFORMS TO ALL APPLICABLE
 FEDERAL MOTOR VEHICLE SAFETY
 STANDARDS, [AND BUMPER AND
 SAFETY STANDARDS, IF
 APPLICABLE] IN EFFECT IN:
 MO. 09 YR. 2015
 IDENTIFICATION NUMBER:
 5KKHAXDV9C...

Equipment
Bidding





Equipment
Bidding





Equipment
Bidding





Equipment
Bidding





Equipment
Bidding





Equipment
Bidding





Equipment
Bidding





Equipment
Bidding





Equipment
Bidding

