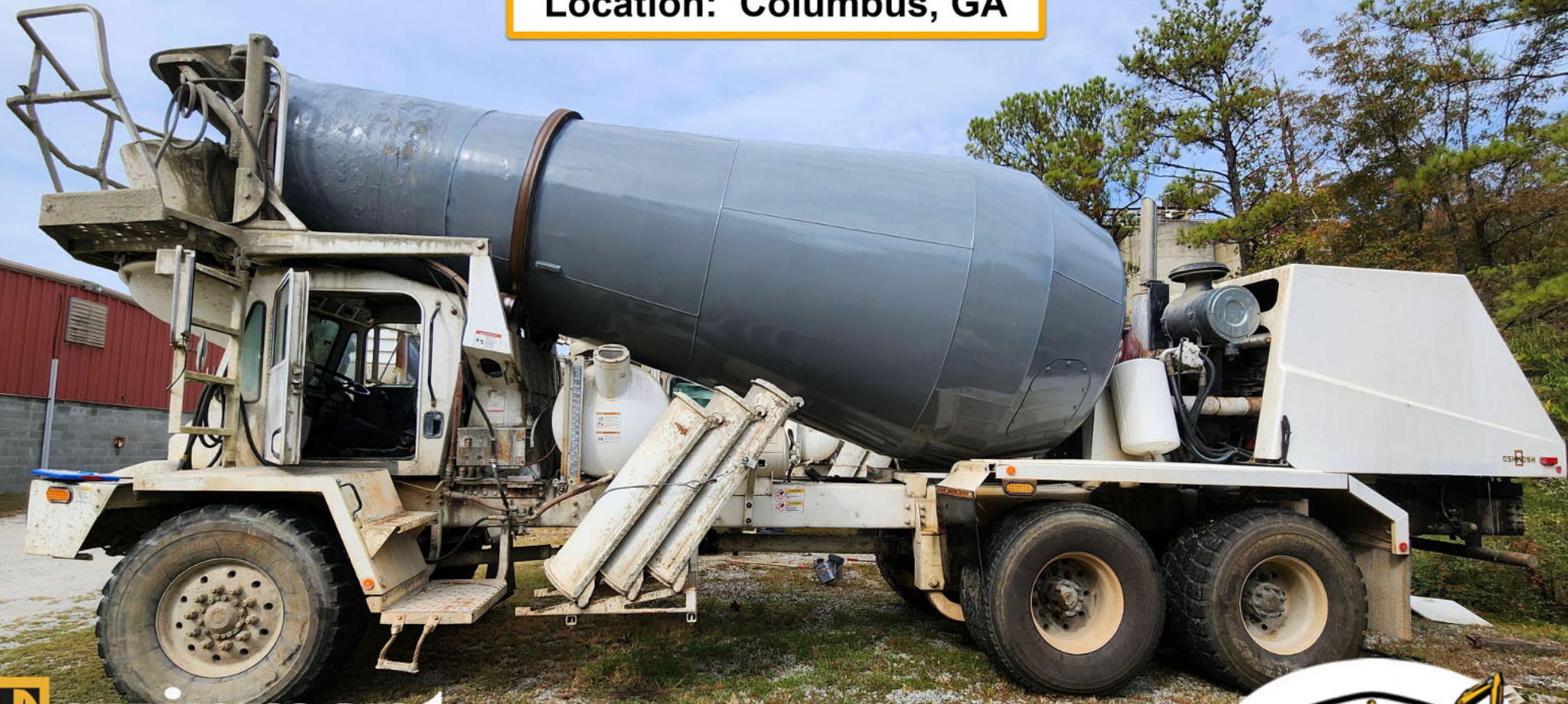


Location: Columbus, GA



Equipment
Bidding

7386





Equipment
Bidding

7386



DO NOT
ALLOWED IN CAB



Equipment
Bidding

7386





Equipment
Bidding

7386



111 Cubic Yard
8.41 Cubic Meter

MIXER
MAXIMUM CAPACITY

Serial Number: **105017**

Drum Volume: 510 Cu. Ft. / 14.44 Cu. M
 Mixer rated mix capacity: 11.3 Cu. Yd. / 8.75 Cu. M
 Average agitator capacity: 13 Cu. Yd. / 9.94 Cu. M

Mixing speed range: 6 to 19 r.p.m.
 Agitating speed range: 2 to 6 r.p.m.

The agitation capacity of inclined drum, open end mixers will vary and is governed by drum axis angle, slump, drum speed, truck chassis suspension, road grade and other variables.

Water tank capacities:		
Measuring Capacity	Gal.	Liters
Flushing Capacity	Gal.	Liters

WARNING

Do not fill the mixer drum with an amount of concrete that will cause the gwr or gwv of the truck (as shown on the certification label of the vehicle manufacturer) to be exceeded.

The manufacturer's data plate affixed to the mixer, indicating the mixer and agitator rating of the drum, specifies the performance of a drum, as a mixer, and/or agitator only. The weight of different mixes may vary.

HINO

Equipment
Bidding

7386





Equipment
Bidding

7386





Equipment
Bidding





Equipment
Bidding

7386





Equipment
Bidding

7386





Equipment
Bidding

7388





Equipment
Bidding

7386





Equipment
Bidding

7386





Equipment
Bidding

7386





OSH H50

Equipment
Bidding

7386





Equipment
Bidding

7386

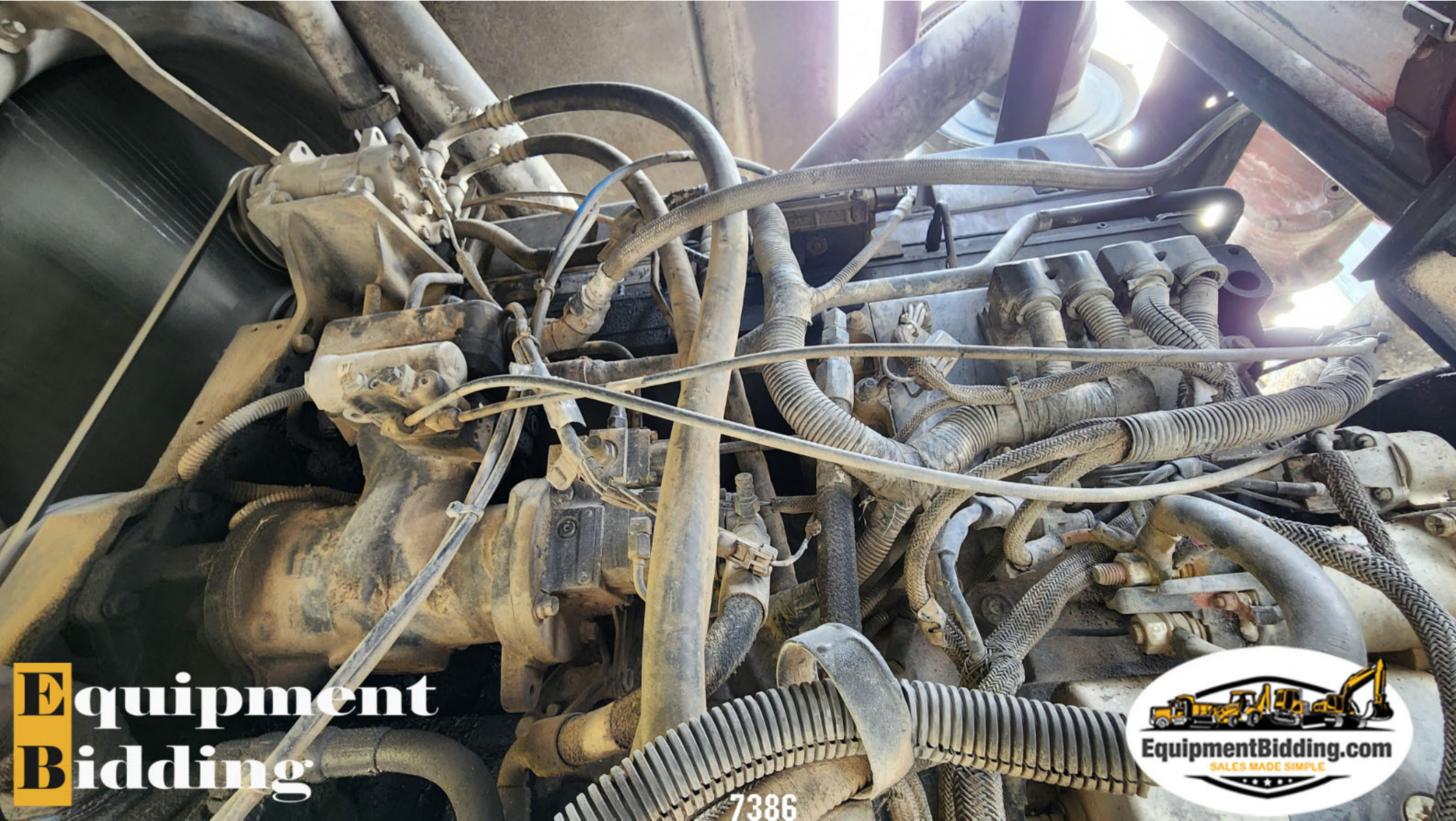




Equipment
Bidding

7386





Equipment
Bidding

7386



Equipment
Bidding

7386





Equipment
Bidding



1386



Equipment
Bidding

7386





Equipment
Bidding

7386





Equipment
Bidding

7386





Equipment
Bidding

7386





Equipment
Bidding

7386





Equipment
Bidding

7386





Equipment
Bidding

7386





Equipment
Bidding



7386



Equipment
Bidding

7386





Equipment
Bidding

7386





Equipment
Bidding



TO APPLY
TING
7386

Equipment
Bidding

7386

