

Location: Columbus, GA



Equipment
Bidding

0676





11 Cubic Yard
8.41 Cubic Meter
MIXER
MAXIMUM CAPACITY

Serial Number 106322
 Drum Volume 510 Cu.Ft./14.44 Cu.M.
 Mfr's rated mix capacity 11.4 Cu.Yd./8.79 Cu.M.
 Average agitator capacity 13 Cu.Yd./9.94 Cu.M.
 Mixing speed range 6 to 19 r.p.m.
 Agitating speed range 2 to 6 r.p.m.

The agitation capacity of inclined drum, open end mixers will vary and is governed by drum axis angle, slump, drum speed, truck chassis suspension, road grade and other variables.

Water tank capacities

Measuring Capacity	Gal.	Liters
Flushing Capacity	Gal.	Liters

WARNING

Do not fill the mixer drum with an amount of concrete that will cause the gwr or gawr of the truck (as shown on the certification label of the vehicle manufacturer) to be exceeded.

The manufacturer's data plate affixed to this mixer, indicating the mixer and agitator rating of the drum, specifies the performance of a drum, as a mixer, and/or agitator only. The weight of different mixes may vary.



1921490

WARNING

Pedestal B

Make sure front pedestal bolts are tight to specs. Loose or missing allow drum to fall and kill or injure.

Drivers:

During pre-trip inspection look on both sides:

1. Missing or loose bolts.
2. Signs of loose, discolored ring, or chipped paint are

Report suspect to maintenance for

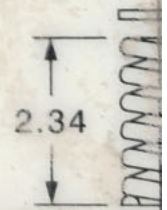
Maintenan

1. 30 days after service, retorque with calibrated torque wrench:
2. Check torque wrench:

 - Every 4 months.
 - Upon report

Replace any loose bolt with new Grade 8 non-flanged, fine new nut, and two flat washers:

1. Torque horizontal fine-thread bolt to (or bolt manufact
2. Torque vertical fine-thread bolt to (or bolt manufact
3. Torque 3/4-in. spring is compr





11 GIGALITERS
1.41 CUBIC METERS
MIXER
MAXIMUM CAPACITY

WARNING **NOTICE**

WARNING

WARNING

DENKORSH

TO PRE-SURFIZE WATER TANK
 1. CLOSE EXHAUST VALVE ON TOP OF WATER TANK.
 2. TURN TEE HANDLE TO OPEN POSITION.

TO DEPRESSURIZE WATER TANK
 1. TURN TEE HANDLE TO CLOSED POSITION.
 2. OPEN EXHAUST VALVE ON TOP OF WATER TANK.

DO NOT pressurize empty tank.

W
A
S
H
E
R
F
L
U
I
D

0
10 40
20 80
30 120
40 160
50 200
60 240
70 280
80 320
90 360
100 400
110 440
120 480
130 520
140 560
150

Equipment
Bidding

0676





Equipment
Bidding

0676





Equipment
Bidding

0676





Equipment
Bidding

0676





Equipment
Bidding

0676





Equipment
Bidding

0676





Equipment
Bidding

0676





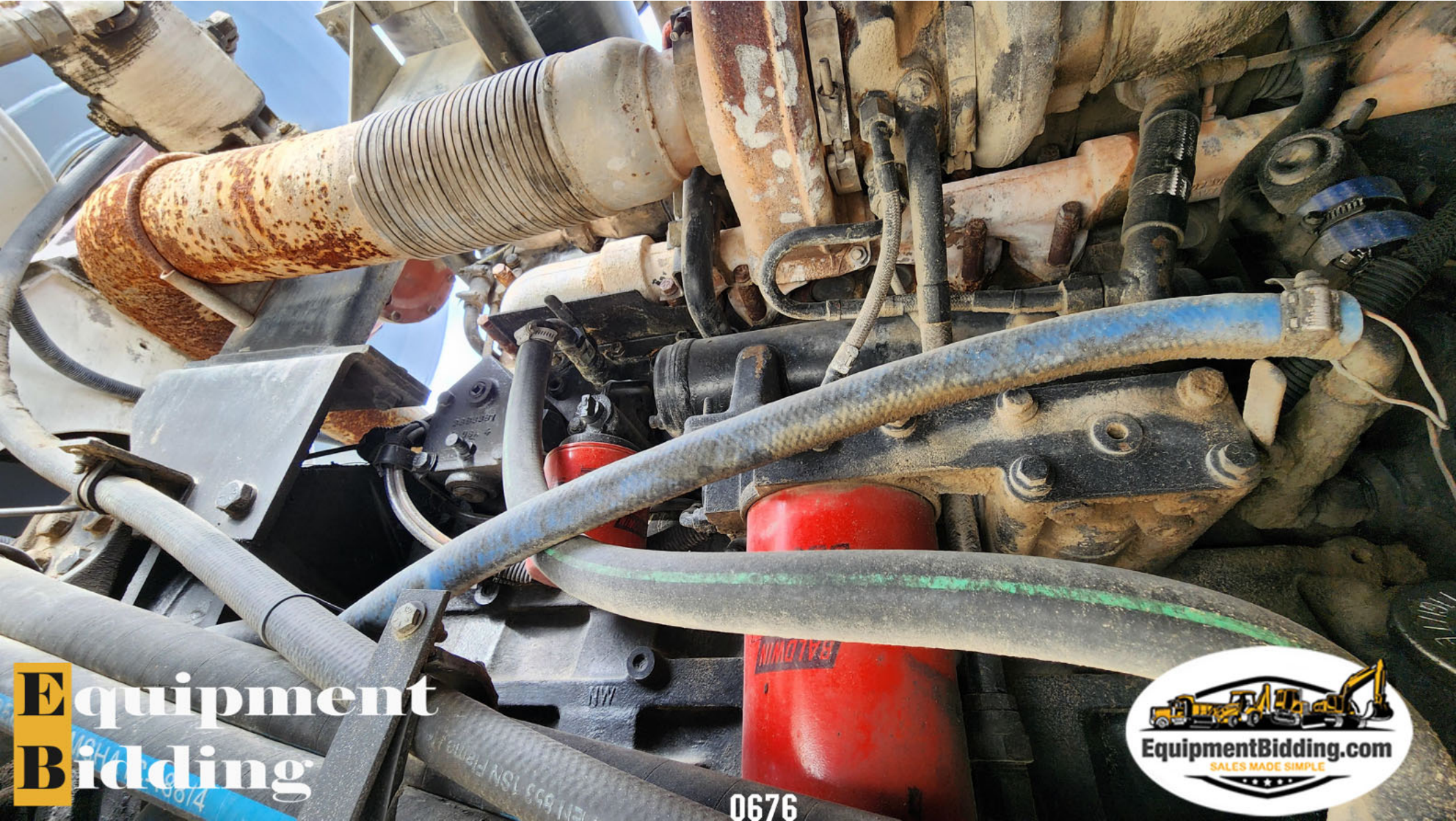
OSH

0676



Equipment
Bidding

0676



Equipment
Bidding

0676





Equipment
Bidding

0676





Equipment
Bidding

0676





OSHKOSH

Equipment
Bidding

0676





Equipment
Bidding

0676





OSHKOSH

Equipment
Bidding

0676





Equipment
Bidding

0676





Equipment
Bidding

0676





Equipment
Bidding

0676





Equipment
Bidding

0676





Equipment
Bidding



0676



Equipment
Bidding

0676





Equipment
Bidding



0676

Equipment
Bidding

75405.4 mi 12.94
23841.05 hrs

0676





Equipment
Bidding

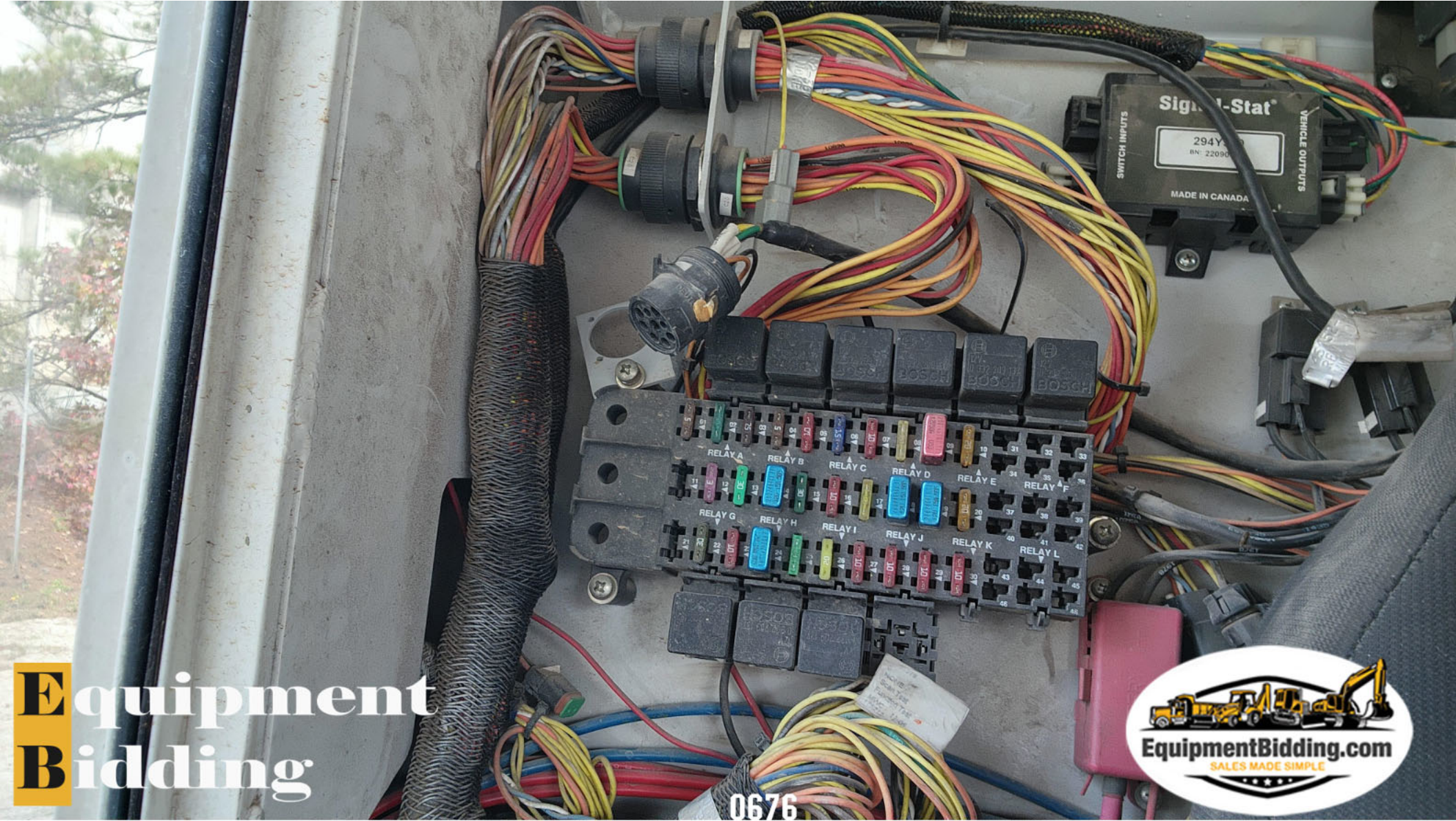


0676

Equipment
Bidding

0676





Equipment
Bidding

0676



Equipment
Bidding



0676

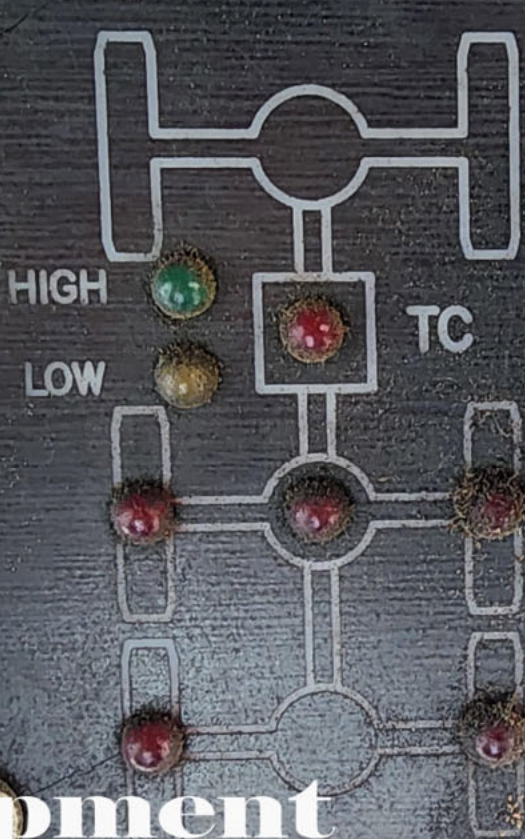




Equipment
Bidding

0676





LOW

6X6

LOCK

6X4

UNLOCK

CASE/
INTER-AXLE

REAR
DIFF

LOCK-UP SYSTEM

0676



Equipment
Bidding



Equipment
Bidding

0676

